

INFORMATION GUIDE

Understanding how the SalonAIR® units remove harmful dust and vapours – and managing your expectations

Here at Vodex Ltd, we have over 100 years' experience with fume & dust extraction within the team - but there are some things you need to be aware of regarding the use of e-files and 'heavy dust' removal when using the SalonAIR®

We are the largest salon fume extraction supplier in the UK - and the SalonAIR® units we supply are designed specifically for the nail industry to 'primarily protect your breathing zone'...

Before we go too far please see below about dusts and how they affect the body...

You need to fully understand how the SalonAIR unit works – it is purely designed to **protect your breathing zone** (especially if you suffer with Asthma etc) from very harmful **AIRBORNE** dust and chemical vapours and smell.

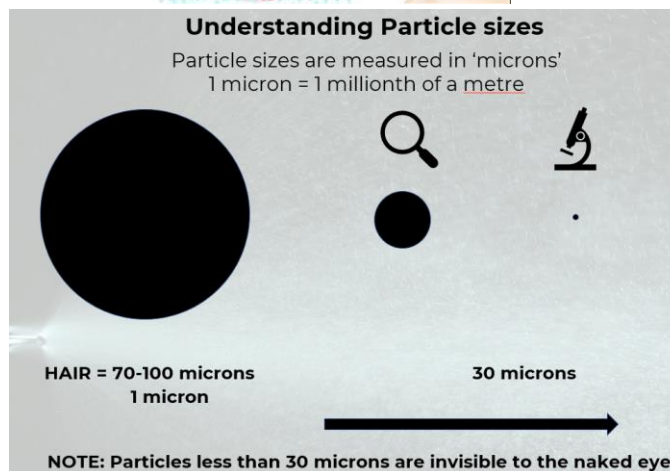
Your Breathing 'Zone'

A 'Beach Ball' sized area between your nose, mouth and working hands



Understanding Particle sizes

Particle sizes are measured in 'microns'
1 micron = 1 millionth of a metre



Indoor Air Quality: The World's leading health related organisations consider (Particle Matter) PM10, PM2.5 and PM1 fine dust fractions as the most important and dangerous for humans.

Airborne particulate sizes and how far they can travel into the body

10micron

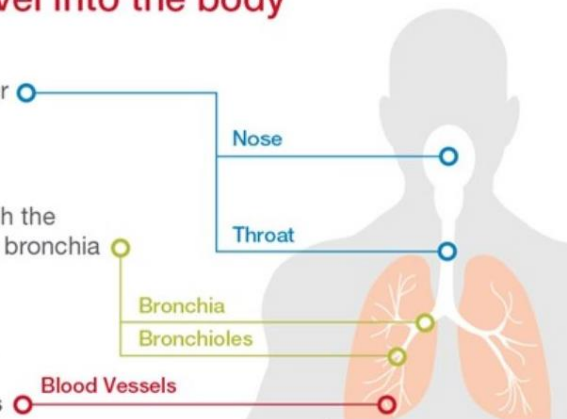
are small enough to enter the **nose and throat**

2.5micron

are small enough to reach the **lungs** and deposit in the bronchia

1micron or smaller

are small enough to find their way through the lungs into **blood vessels**



The SalonAIR® is not a high pressure vacuum cleaner! and it was never intended to be a large heavy dust collector – (Note: No salon extractor out there would be powerful enough to remove all dust) – but it does not have to.

For reference: We supply many 'industrial dust extractors' for heavy dust – but these would be 10 times the price, 10 times larger and way too noisy for a salon – see below example!



Large dust collector ~£ 3,000 GBP/EUR



ARTISAN



HEALTH & PHARMACEUTICAL



VODEX
INDUSTRY & MANUFACTURING



BEAUTY & COSMETICS



ELECTROSTATIC PROTECTION

So, we have to keep things in perspective and manage expectations for the price/performance.

You have to imagine that when you carry out nail treatments (filing/e-file etc) the dust that settles on your table is VERY LARGE (typically over 100 microns +) compared to the fine dust in the air around your head and face– It is this fine dust - 10 microns and below - that causes Asthma and breathing problems.

50% of the dust you create is INVISIBLE to the eye – you simply cannot see it as it is so small. THIS is the dust that you can inhale deep into your lungs and that can lead to occupational asthma. (Respirable inhalable dust as seen below)



Airborne fine inhalable dust as seen in sunlight phenomenon

Every breath you take comes from your “breathing zone” – a beach ball area in front of your face. Any fine dust **under 10 microns** in size could be inhaled within this area – but with the SalonAIR® nozzle or FileOWay® this dust (and smells) are extracted away from your lungs to prevent you inhaling the airborne dust. – remember a single hair on your head is 80-100 microns across!

See this picture of an electronics engineer soldering (this gives off a small amount of smoke that you can see on the left image). However, the right-hand image is the same man BUT with a bright light shining on the smoke – this is ACTUALLY



the same amount of smoke but it shows up the invisible smoke) – it's exactly the same for nail dust and fumes.

This image is from the UK Health & Safety Executive:



Soldering with and without Tyndall illumination

So, in conclusion – do not worry too much about the dust on your table – this is more of an inconvenience and can be swept up or brushed carefully into a waste bin (or vacuumed with a HEPA filtered vacuum cleaner). Please take note about the INVISIBLE and TINY dust particles that DO NOT settle on your desk as these are what can cause Asthma and breathing problems. The SalonAIR® is designed to not only remove these fine dusts, but it also FILTERS out all the dust to 99.95% to 0.3 microns and adsorbs all smells and vapours from MMA and Acetone etc.

We have hundreds of happy customers all over the World who have seen a huge difference in their AIR QUALITY around them, and when you check the filters after a few days/weeks – this shows what you WOULD have breathed in without the SalonAIR® unit!

IMPORTANT NOTE: Positioning of the arm/nozzle is very important too – or when working over the FileOWay® capture tray.





Imagine vacuuming/hoovering your carpets from 30 cm (12") in the air - it won't work! - and yet it is sucking air at same airflow...

Make sure you are ALWAYS working close to the extraction capture device (FileOWay® or Arm) at all times.



The SalonAIR® may not remove 100% of all the dust especially if e-filing - but it will protect your breathing zone from the invisible dust particles! Check the filter in 2-3 weeks and see what it has collected – see example below:





Full pre filter in the SalonAIR® unit !

With e-files we will never be able to catch all the large pieces of dust as they are being spun out at very high speed...but they also land on your desk fast, but this is not the main health concern as they cannot be inhaled.

Many – if not most, ‘nail dust’ extractors do not filter dust low enough (ie you must always have a HEPA filter) BUT they also DO NOT remove smell or vapours – you need a deep bed carbon filter for this – in the SalonAIR® unit this is supplied as standard so you can be assured of maximum protection at all times!

If you have any further questions on this or how filtration works please email us on sales@vodex.co.uk



Frequently Asked Questions (FAQs)

Q. What's the difference between a FileOWay® and a FileOTray®?

FileOWay®



FileOTray®



The *FileOWay®* is an easy to use – sit on the desk top – ‘plug n play’ downflow capture device for fine dust and fumes. The MILL version now has magnetic strips (not screws) to enable easy separation for cleaning without any tools.

The *FileOTray®* is a ‘fixed’ permanent downflow tray that needs to be fitted INTO a desktop - which is easy to do with some basic tools (with the exception of glass top tables). This *FileOTray®* install video shows the process (or scan QR code):

<https://www.tiktok.com/@vodexbeautyextraction/video/7151138642906451206>



Q. I am not sure if I need ARM extraction from above or Downflow extraction with a FileOWay® or FileOTray®?

This is down to personal choice and the treatments being carried out. The arm extracts from 'above', and the *FileOWay*® and *FileOTray*® extract 'downwards'. If using e-files the dust can be thrown in many directions so it is difficult to capture 100% of the dust. A lot of e-file dust is above 100 microns in size (approx the diameter of a human hair), so this wants to quickly fall to the table and settle, therefore the downflow is probably a better option. Fumes and smell is lighter and fine dust from hand filing can be captured well by the arm – however the positioning of the arm is critical – the closer it is the better it will extract the dust and fumes! Note that heavy dust is not inhalable dust and therefore not a respiratory concern, more of an inconvenience.

Q. Why can you run one Arm AND a FileOTray® *but NOT an Arm and a FileOWay*®?

When we re designed the *FileOWay*® MkIII we increased the 'number of holes' in the top to allow better capture of dust and fumes. Because of this the *FileOWay*® now requires more airflow to perform properly and meet SR13 and COSHH guidelines.

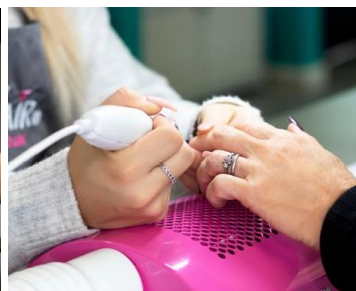
Therefore, if an ARM AND *FileOWay*® are BOTH connected together on an SA1002 the airflow is 'shared' and the extract performance will be reduced, so we suggest EITHER the *FileOWay*® OR Arm but not both. (The exception to this is in the USA because they run on 60Hz mains frequency, the fans run 10% faster, therefore running both is possible in the USA, but it will always work much better with one accessory attached.)

The *FileOTray*® is smaller and has LESS holes than the *FileOWay*® – therefore it IS possible to run BOTH on an SA1002, however as above the SA unit will always still perform best with one accessory attached.

Arm



FileOWay®



FileOTray®

