

# OptiFlo® Compact



Vodex Ltd, Unit 9 Claylands Business Park, Claylands Road, Bishops Waltham, Hants SO32 1QD

Tel: +44 (0)1489 899070 Web: [www.vodex.co.uk](http://www.vodex.co.uk) EM: [sales@vodex.co.uk](mailto:sales@vodex.co.uk)

## High performance in a compact solution

OptiFlo® Compact is a dry dust collector that uses cartridges designed to reduce the emission of particles into the air and guarantee an environment that is free of dust, thus increasing the safety of the industrial process and improving the environmental conditions of the location where the activity is being carried out.

Designed as a compact solution, the singularity of OptiFlo® Compact resides in its ability to handle a wide range of flows, between 1,000m³/h and 20,000m³/h, using a unit that is smaller than that of other equipment operating in the same filtration range.

The answer resides in the modularity of its design. Available in different sizes, OptiFlo® Compact can house between 4 and 16 filtering elements. The fact that the filtering elements are arranged in

rows and columns and mounted on a single plate, significantly reduces the space that is required for it at the plant.

OptiFlo® Compact also has a built-in fan and electrical panel and incorporates its own dust discharge and collection system, turning it into a "plug and play" filtering unit, which may also be used as a plug-in unit depending on the characteristics of the application; indoors as well as outdoors.

Its operation is highly intuitive, based on an easy operation in terms of the connections and initial start-up as well as its subsequent maintenance thanks to, among other things, the arrangement and accessibility of the components that comprise the system.

## Longer life cycle and reduced costs: the advantages of an optimised design

OptiFlo® Compact incorporates an automatic counterflow compressed air cleaning system that allows operating continuously for prolonged periods of time, ensuring a constant load loss.

With a larger air inlet surface, the inlet speed is reduced, minimising abrasion of the filtering elements and improving the distribution of dust in the dirty air

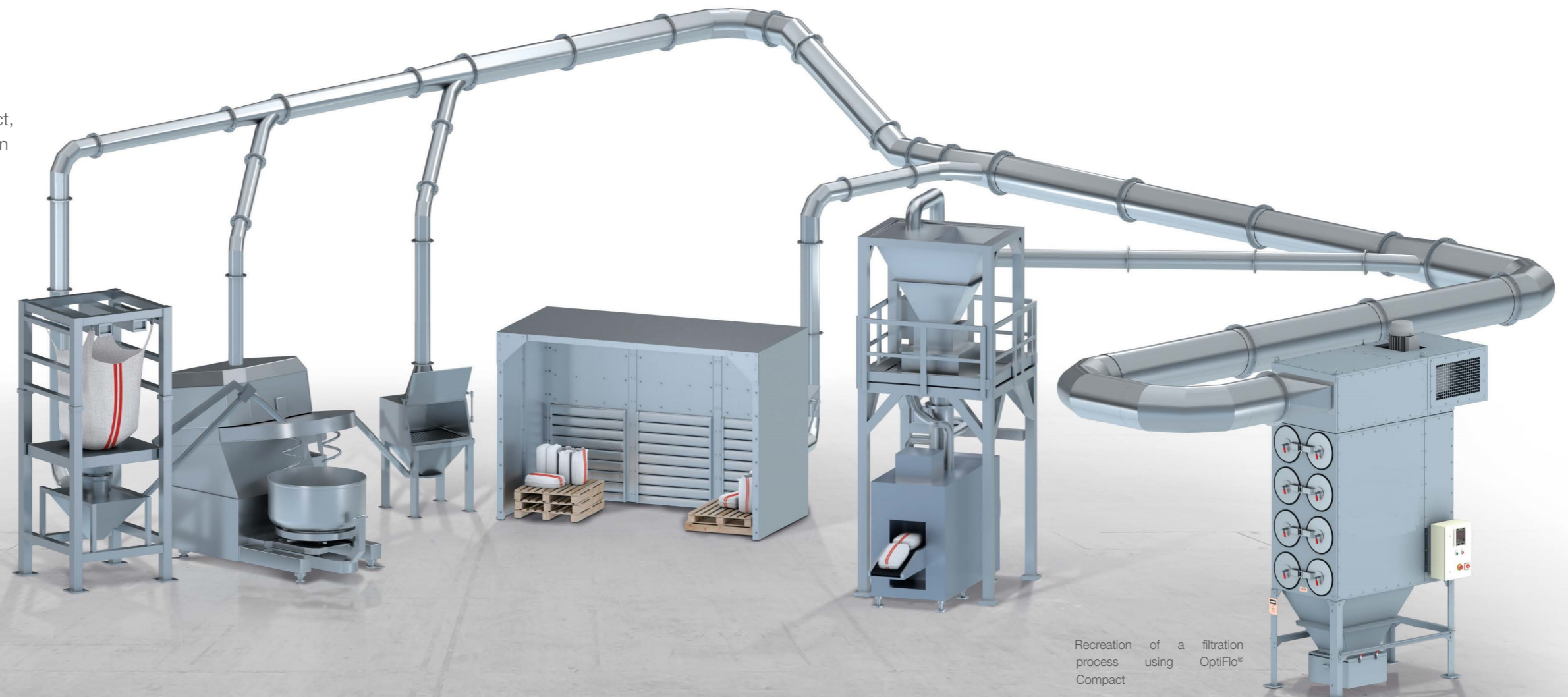
plenum. The result: longer service life of the filtering elements and a greater filtration capacity than that of other units on the market with a similar number of cartridges. And all of this with a filtering system that is compact and modular.

- ▶ Proven efficiency of 99.99% for particles larger than 0.5µm.
- ▶ Greater efficiency.
- ▶ Longer operating life of the unit and the cartridges
- ▶ Reduction in required maintenance.
- ▶ Lower operating costs.

## A strategic part in the process

Safely reduces emissions and recovers the product, sizing OptiFlo® Compact according to your filtration needs.

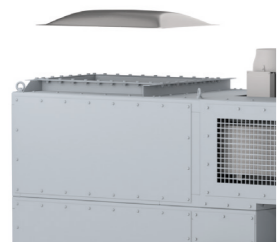
- | Emptying / filling of Big-Bag and sacks
- | Filling of sacks and enveloping
- | Grinding
- | Mixing
- | Weighing
- | Drying
- | Covering
- | Pneumatic transport and conveyor transfer



Recreation of a filtration process using OptiFlo® Compact



# The components of a *plug and play* solution



### Venting panel

Optional for ATEX environments and with the possibility of having a top or side arrangement.



### Cartridge access doors

Designed for easier access to the filtering elements and for conducting maintenance on the equipment; they incorporate a hinge that keeps the cover attached to the body of the filter, making filter replacement easier and quicker.



### REDClean® Media Cartridges

The standard version of OptiFlo® Compact is supplied with built-in REDClean® Media NFR (nano-fiber) cartridges.



### Collection drum

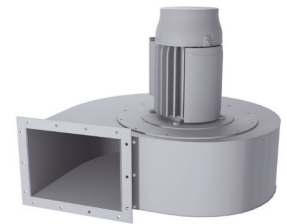
Offers a larger storage capacity (100l) than the average capacity offered by similar units on the market.



Model shown in the picture: OptiFlo® Compact 2RC8 - ATEX

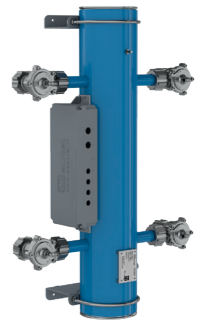
### Fan

The built-in fan is located at the top of the unit and is protected by a soundproof box that helps reduce the noise to levels lower than that generated by external ventilation systems.



### Compressed air cylinder

Built-in compressed air cleaning system; accessible for streamlining and simplifying maintenance and repairs.



### Electrical panel

Compact and highly intuitive, making it easier and faster to start-up the fan and the cleaning controller.



## Choose the version that better meets your needs

Different versions are available of the OptiFlo® Compact for you to choose from based on the flow you need to filter. In terms of the structure, the standard version is manufactured in carbon steel, although a stainless finish is also available for sectors and applications that require it.

We are also aware of the different requirements of our clients as well as of the heterogeneous characteristics of their processes, which is why we have different options available for increased safety and durability of the equipment. For all these reasons, OptiFlo® Compact has positioned itself on the market as a versatile filtering unit that is easy to operate and capable of adapting to the particular requirements of any industry.

- | **BIBO (Bag In – Bag Out) system** that allows replacing cartridges in potentially toxic and dusty environments in a manner that is safe for the operator. Avoid direct contact with the filtering element and also with its dust collector.
- | **ATEX** for use in potentially explosive atmospheres using either a venting panel or a pressure release system and flame arrestor.
- | **Spark protection elements** that increase the safety of the filtration process in metal and metallurgy industries.\*

\* OptiFlo® Compact SPK Model. For further information please contact Vortex Ltd



Model shown in the picture:  
OptiFlo® Compact 2RC8 - ATEX

## REDClean® Selecting a proper filter changes everything

The continuous efforts of AAF in R&D&i and the search for a greater efficiency in filtration have provided a wide range of cartridges capable of meeting the filtration needs of the most demanding industries.

### The REDClean® Media line

#### REDClean® D/DFR

Mixture of cellulose and synthetic fibers reinforced with a "flame retardant" finish as an available option. MERV 11 efficiency rating.

#### REDClean® N/NFR

Aggregate of cellulose and synthetic fibers with nano-fibers. Leading technology in the industry with a MERV 15 efficiency rating, the highest rating with the lowest differential pressure. Also available with a "flame retardant" finish.

#### REDClean® S

Non-woven 100% polyester stocking that offers an excellent resistance to abrasion, temperature and humidity. MERV 11 efficiency rating.

#### REDClean® SA

100% polyester stocking with an aluminium antistatic finish for ATEX applications. MERV 11 efficiency rating.

#### REDClean® M

Mixture of washable synthetic fibers. Excellent resistance to humidity and to high temperatures. MERV 11 efficiency rating.

The REDClean® cartridges are especially designed to reduce the loss of operating pressure and the compressed air consumption, which translates to advantages such as:

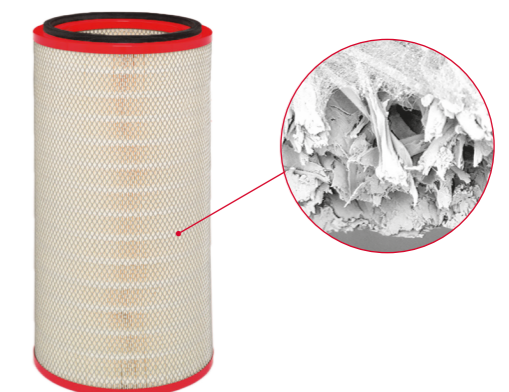
- ✓ Low energy consumption
- ✓ Excellent releasing of dust
- ✓ Extending of the service life
- ✓ Fewer cartridge replacements



### Nano-fiber: the advanced technology that results in cost savings

The outer layer of nano-fiber that is incorporated in the REDClean® N and REDClean® NFR models enables to collect smaller particles, preventing these from penetrating the stocking.

This way the durability of the stocking is increased and the cartridge replacement frequency is decreased.





VODEX Ltd  
Unit 9, Claylands Business Park  
Claylands Road, Bishops Waltham  
Southampton  
SO32 1QD

Email: [sales@vodex.co.uk](mailto:sales@vodex.co.uk)  
Web: [www.vodex.co.uk](http://www.vodex.co.uk)  
Tel: 01489 899 070